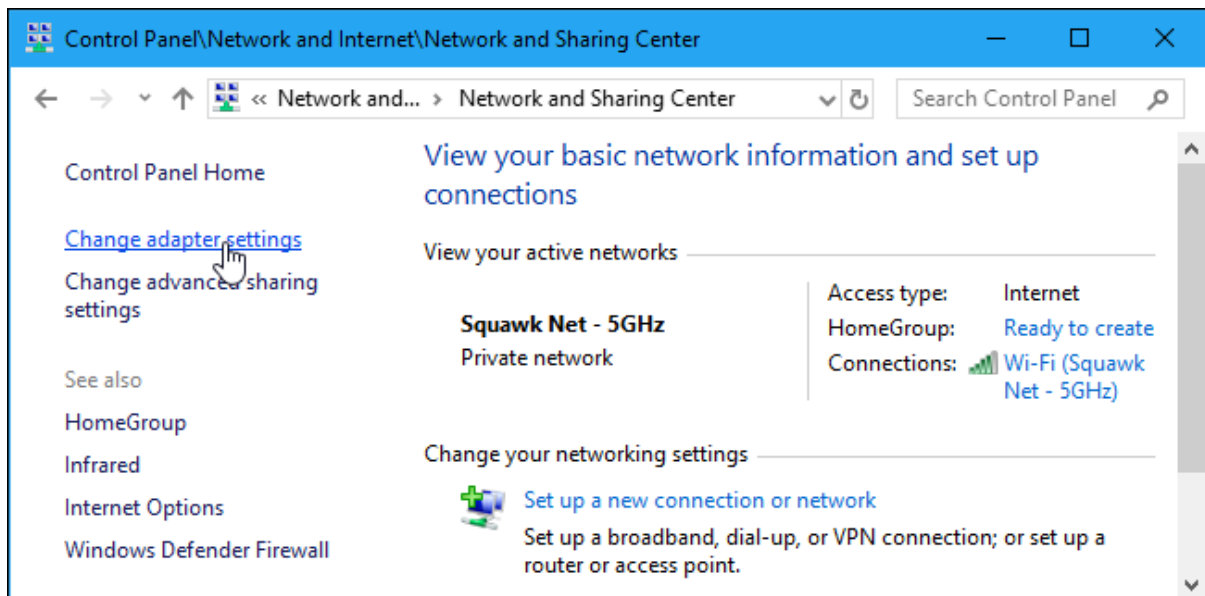


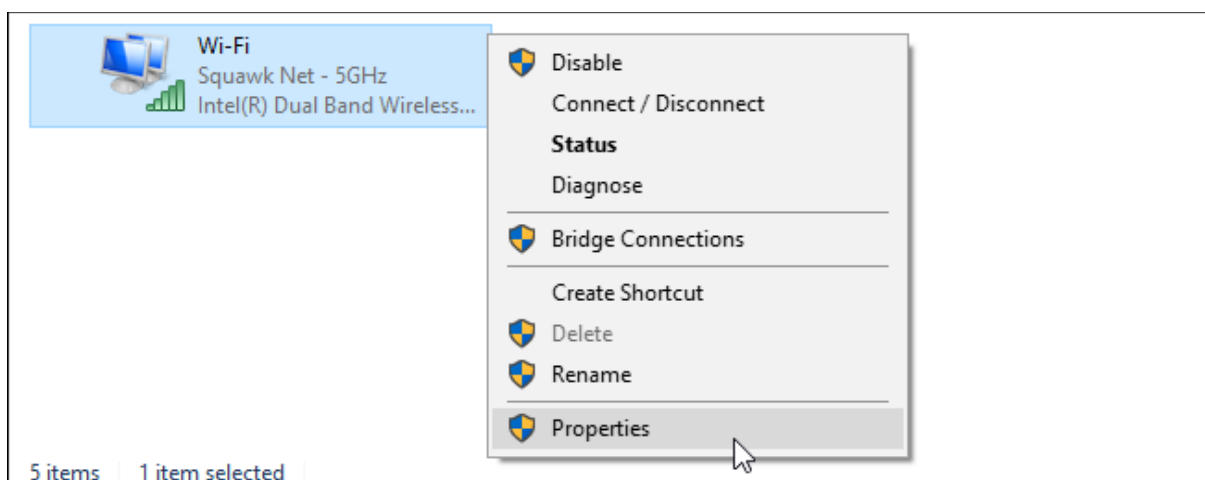
On a Windows PC

On Windows, you can change this option from the Control Panel. This option isn't yet part of the new Settings app on Windows 10.

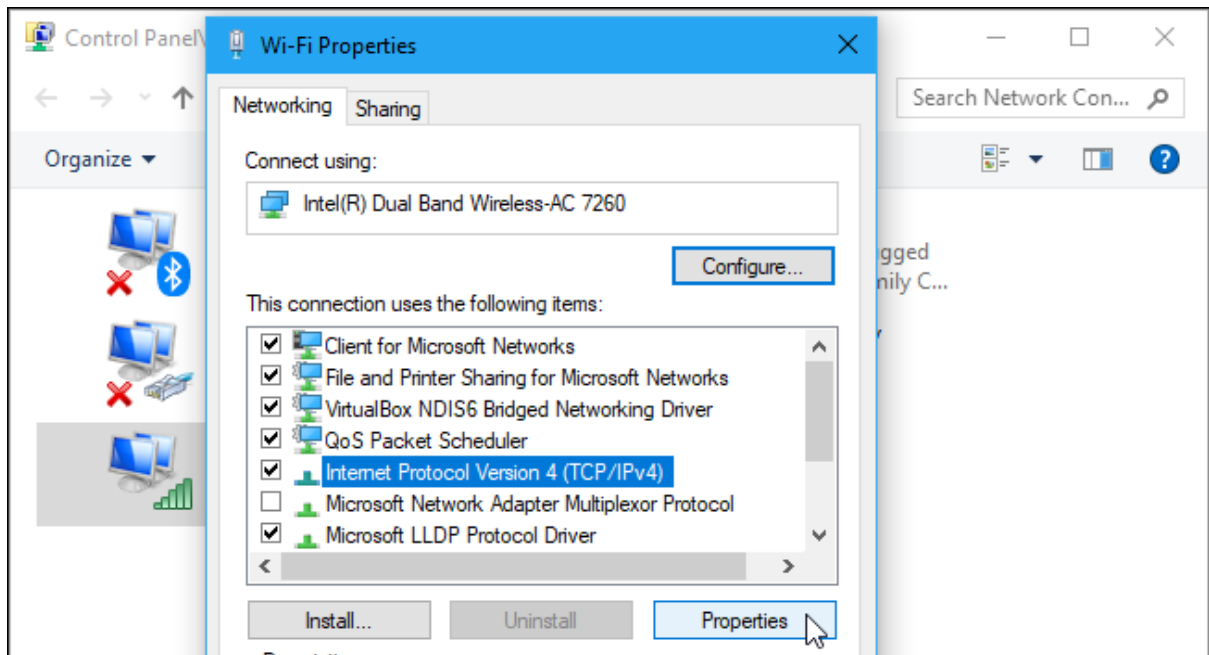
Head to Control Panel > Network and Internet > Network and Sharing Center > Change adapter settings.



Right-click the network connection you want to configure and select "Properties". This option must be changed separately for each connection you want to change it for. This means that, if you have a computer with both Wi-Fi and wired Ethernet connections, you'd have to change it for both your Wi-Fi and Ethernet adapters if you wanted to change the DNS server for both.



Select "Internet Protocol Version 4 (TCP/IPv4)" in the list and click "Properties".



Select “Use the following DNS server addresses, enter the addresses of the DNS servers you want to use, and click “OK”.

If you want to set a custom DNS server for IPv6 connections as well, select “Internet Protocol Version 6 (TCIP/IPv6)”, click “Properties”, and enter the IPv6 addresses as well. Click “OK” when you’re done.

