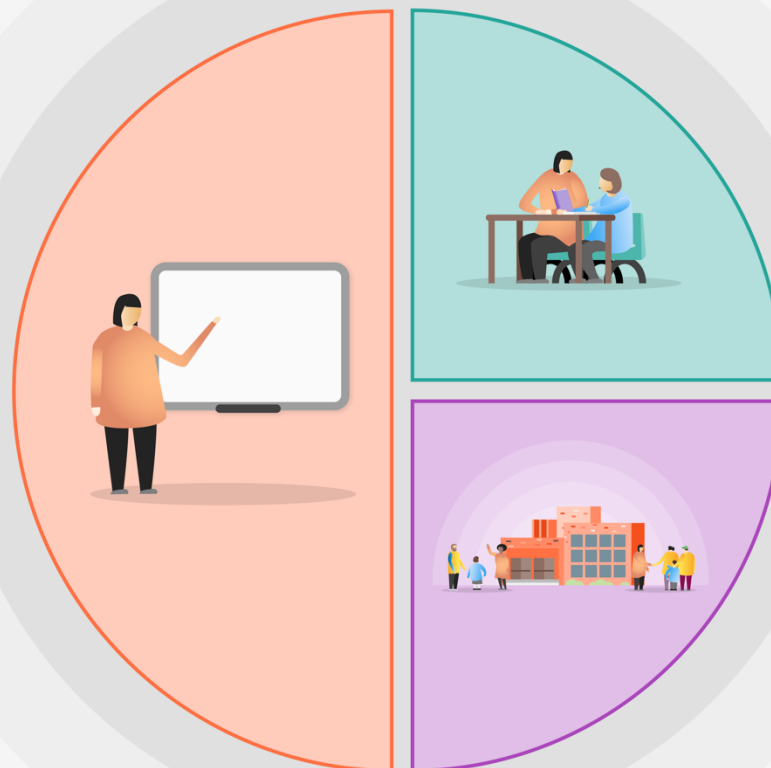


How do we support and champion students who are pupil premium eligible at NOA?

North Oxfordshire Academy

1 Teaching

- ✓ Rosenshine Principles of Instruction across all Key Stages to implement the NOA curriculum.
- ✓ Knowledge rich & ambitious curriculum
- ✓ Deliberate practice as a method of CPD delivery
- ✓ Curriculum Masterclasses to hone subject knowledge
- ✓ Subject specific CPD and UL subject advisors
- ✓ Deliberate Practice CPD every week
- ✓ TLAC approach to disruption free learning
- ✓ Metacognition and self-regulation strategies are embedded in the school's curriculum and a specific subject lessons
- ✓ Recruitment and retention policy
- ✓ Deliberately reduce workload
- ✓ Monitor and evaluate outcomes and quality of implementation by using a Deep Dive model in subject areas and across demographic groups.
- ✓ Support of early career teachers



2 Targeted academic support

- ✓ Learning Coach Team & Inclusion support base
- ✓ IT support for all PPG students
- ✓ Whole school reading project
- ✓ Whole School home learning strategy with after school and before school support
- ✓ National Tutoring Project
- ✓ Careers guidance through 1:1 meetings and small group support.
- ✓ Baseline Testing
- ✓ Numeracy Support via SPARX

3 Wider strategies

- ✓ Attendance Support
- ✓ Student Engagement Dept & Disruption Free Learning policy
- ✓ Daily Pastoral Support
- ✓ Social and emotional support inc Mental Health First Aid Team
- ✓ Aspire wellbeing project
- ✓ Breakfast Clubs & Homework clinics
- ✓ Inclusion Learning Coach model
- ✓ Forest school and Emotional literacy Support programmes
- ✓ SEND drop in space & Safe Space
- ✓ Peer mentoring
- ✓ Scholars Programme & CIAG aspirations inc Oxbridge
- ✓ Enrichment programme including clubs, trips and visits.
- ✓ Well developed PSHE and RSE programme